

**WIN!
WIN!
WIN!**

PRIZES FOR EVERYONE!

When you've finished the Jolly Fisherman Trail and answered all the questions - detach the question sheet and hand it in to the Tourist Information Centre, to collect your prize!

- BOOKS
- BADGES
- CRAYONS
- DISCOUNT VOUCHERS

SIMPLY

FOLLOW THE JOLLY WELLY TRAIL ANSWERING THE QUESTIONS OVERLEAF THEN HAND IN YOUR ANSWERS TO THE T.I.C

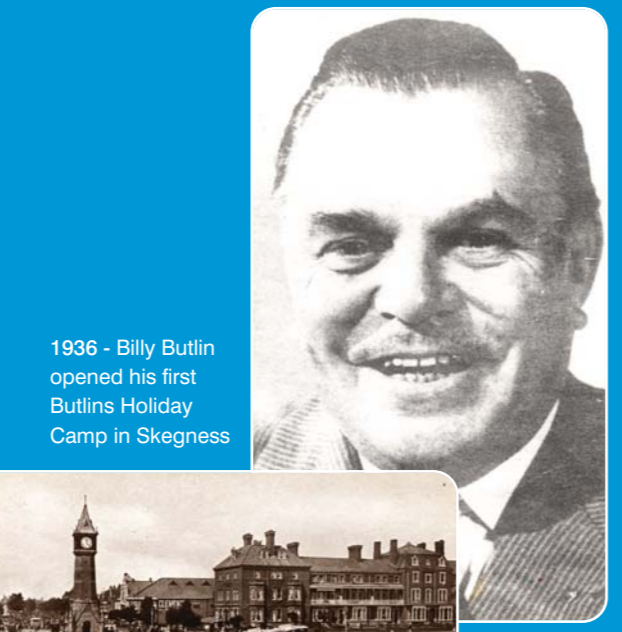
Your Name _____
 Address _____

 Postcode _____
 Email _____

THE JOLLY FISHERMAN TIMELINE



1908 - Jolly Fisherman poster first used to promote Skegness



1936 - Billy Butlin opened his first Butlins Holiday Camp in Skegness



1958 - Sandcastle competition on Skegness beach



1978 - The Pier was battered by severe weather and heavy tides



2008 - Pleasure Beach Skegness



1920's/30's - As the motor car became more popular Skegness saw an increase in visitors.



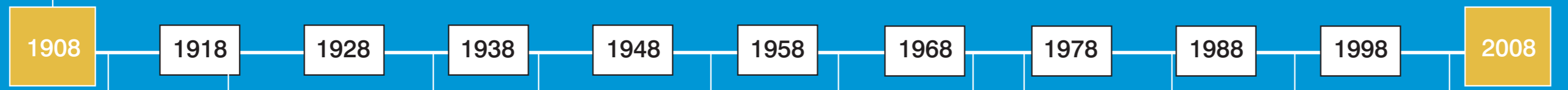
1953 - East Coast floods caused terrible destruction.



1965 - Skegness Natureland opened



1989 - Jolly Fisherman statue in Compass Gardens commissioned



1911 - Coronation of George V



1914-1918 - WW1



1936 - BBC launches its first TV transmission



1939-1945 WW2



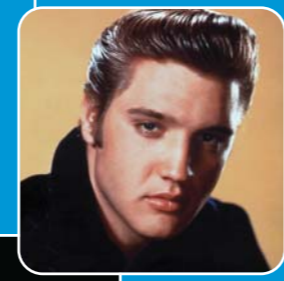
1952 - Coronation of Queen Elizabeth II



1963 - First episode of Doctor Who shown on TV



1969 - First man on the moon



1977 - Elvis Presley dies



1983 - Seat belt law came into force



1994 - National Lottery started



2003 - England wins the Rugby World Cup



For more information

For further information on Skegness please contact the Tourist Information Centre
 Tel: 01754 899987
 Email: skegnessinfo@e-lindsey.gov.uk

For more information and events on the Jolly Fisherman, Skegness and the County log on to
www.visitlincolnshire.com

For information on places of interest, within Skegness and the County
 TEXT HISTORY to 64118

To find out nearest Tastes of Lincolnshire pubs, restaurants, farm shops and tea rooms text
 GOODTASTE to 64118

Acknowledgements

Photographs by kind permission of Mr Winston Kime and John Byford
 Compiled by - East Lindsey District Council, Lincolnshire Tourism, Skegness Civic Society, Skegness Town Council
 Produced by East Lindsey District Council ©2008



Designed and Printed by City Graphics Partnership, Tealby, Lincolnshire T. 01673 638888

THE JOLLY FISHERMAN TRAIL



100TH ANNIVERSARY OF THE JOLLY FISHERMAN

FUN FOR THE WHOLE FAMILY

Take a walk around Skegness and learn about the history of the town

SKEGNESS

100TH ANNIVERSARY

The Jolly Fisherman

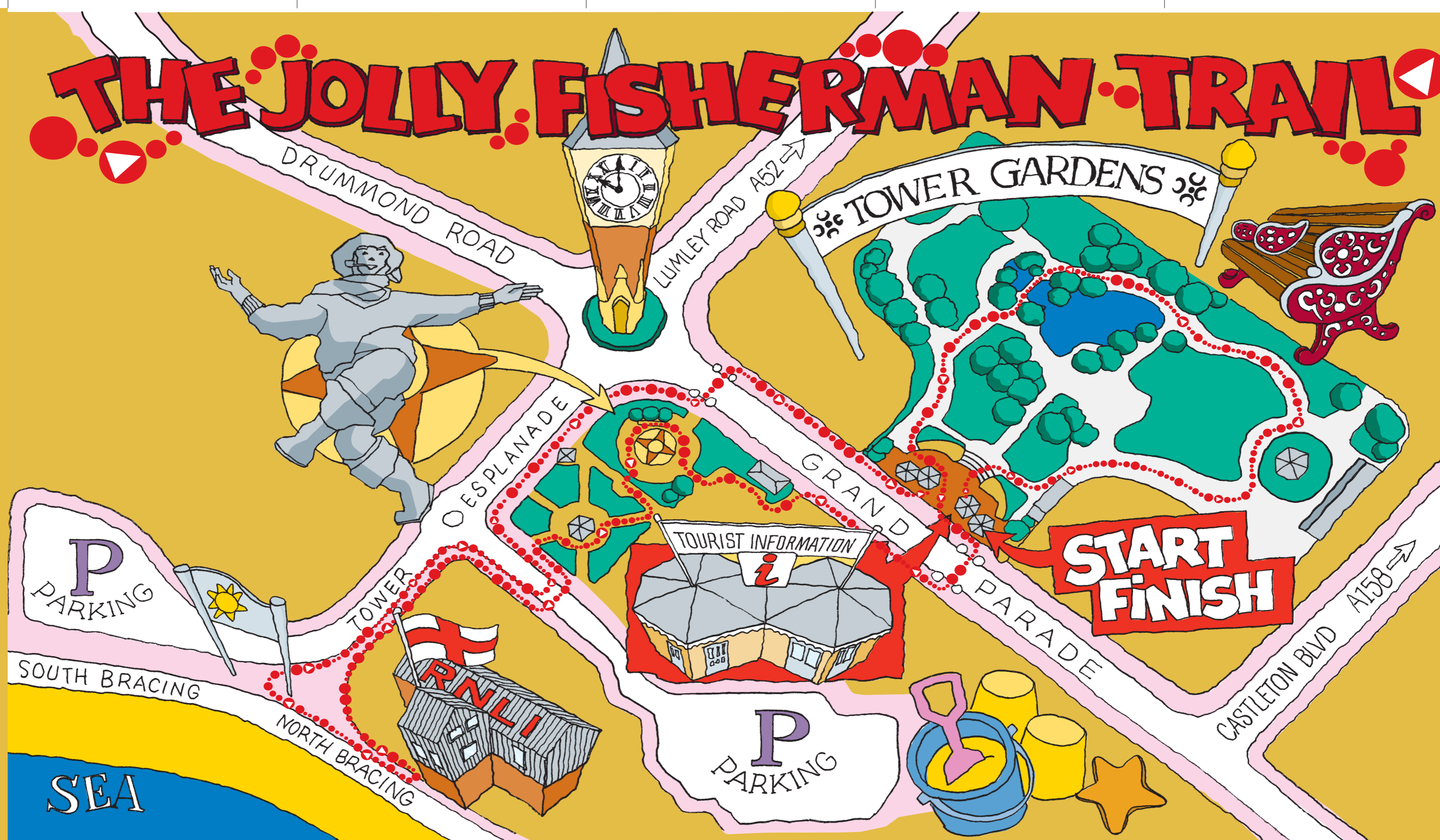
In 1908, the artist John Hassall was asked by the Great Northern Railway Company to produce a poster to promote holidays to Skegness – and the Jolly Fisherman was born!

Since then Skegness and the Jolly Fisherman have become inseparable and Jolly has been, and still is, a much loved icon for locals and visitors alike.

This trail takes you around the Jolly Fisherman's haunts and on the way, you'll get a chance to learn all about him, and the town.

All you have to do, is follow the map and look for a post with a Jolly fisherman logo, then answer the question on this leaflet. When you've answered them all, just return your form to the Tourist Information Centre - there's a prize waiting - just for you!

Good luck - and have a Jolly good time!



START Footprints from inside entrance of Tower Gardens and on the right - Pick trail up from here

FOOTPRINTS & QUESTIONS

Go through the entrance of Tower Gardens and veer right, continue to Festival Hall

- How many benches are there facing the bandstand?

Following the footpath, the footprints continue through the middle of Tower Gardens and around the pond and over the bridge

- How many entrances/exits are there to the gardens?

Footprints continue up to the Information Board to the right of the main entrance

- Who designed Tower Gardens? (as a bonus - the board also reveals number of entrances)

Footprints then continue out of the entrance by the TIC, turn left and cross the road with the Green Man Crossing. They then turn right towards the Embassy Centre

- Name an act appearing at the Embassy Centre?

Footprints then continue in the same direction and into Compass Gardens and stop at interpretation board (to be erected opposite the fountain and in front of the drain type things)

- What date did the Jolly fisherman Poster first appear?
- Name the artist who drew the original Jolly Fisherman poster?
- What was the length of the pier when it opened in June 1881?

Footprints continue to the right around the Jolly Fountain into the Rose Gardens

- Who presented the Bandstand in the Rose Gardens, to the town in 1996?

Footprints lead to the exit, then turn left to the crossing located at the car park entrance, cross the road, turn right and continue (keeping to the left of the pavement) towards the sea to the RNLi building, turn left to the Information Board (the board faces the sea)

- How many lifeboats does Skegness have?
- What are those lifeboats called?

Footprints turn around and continue to the Sea Safety Board

- A beach safety question from the information board will be inserted here

Footprints continue back the way they came and on the right hand side of pavement and continue in the direction of the Clock Tower

- What is the date on the Clock Tower?

Footprints continue to Tower Gardens entrance and completed forms to be handed back to the TIC